



Afterschool Centers on Education™

Success – A Texas State of Mind™

Cycle 6.1 Orientation—Program Components Cycle 6

Candace M. Ferguson,
21st CCLC State Coordinator/Program Manager
Texas Education Agency

Special Year 1 Conditions

Special Year 1 Conditions

Important Dates

- Grant Start Date: February 1, 2010
- Grant Period: February 1, 2010- July 31, 10
- Program Start Date: June 1, 2010

Special Year 1 Conditions, cont.

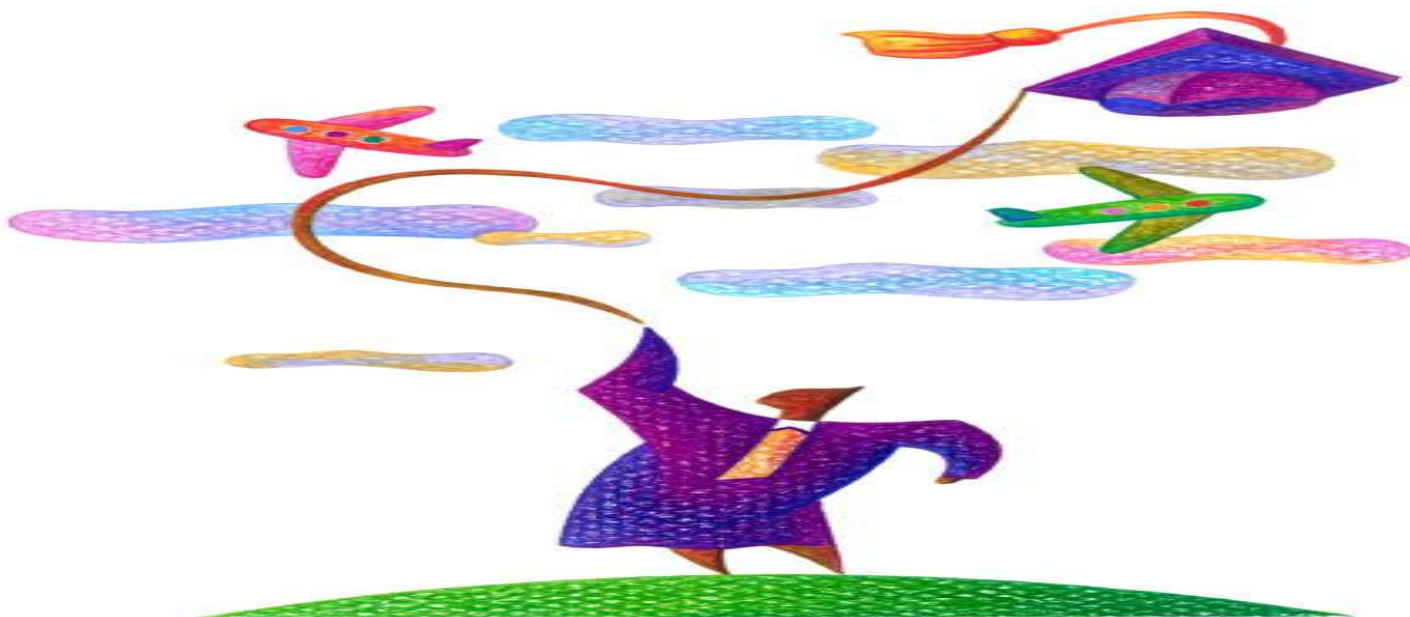
- Must serve 50% of unduplicated students/ adults submitted in Application
- Must provide a minimum of a 4-week summer program for students & adults

FAQ's

- What if I want to start earlier than 6/1?
- Can I start slowly?
- What if this date changes?

21st CCLC & TEA Overarching Goal

- All students will graduate prepared for college and/or the workforce!



21st CCLC Objectives

- Texas 21st CCLC programs will strive to improve the following:
 - 1) Academics
 - 2) Attendance
 - 3) Behavior
 - 4) Promotion rates
 - 5) Graduation rates

21st CCLC State Evaluation Results

- Follow up to 2006-2007 Annual Report published March 2008
- Initial Findings:
 - Cumulative attendance in 21st CCLC activities associated with strong, statistically significant decreases in 5-year grade retention rates for MS students
 - Attendance at math focused sessions significantly increased the likelihood that students would pass the math portion of TAKS (2006-2008)
 - **Parent participation is important!**

New Additions to Cycle 6

- Critical Success Factors
 - Indicators of success
 - Reflect behavioral changes
 - Essential for meeting 5 objectives
- Milestones
 - Key strategies
 - Foundation on which CSF's built

Questions?

- We want you to be successful so please feel free to call for clarification:
- Program Questions- Program Requirements, Training, TX21st, TEASE access, etc.
- Financial Questions- NOGA, Amendments, Expenditure Reports, Allowable/ Unallowable Costs

TEA Contacts

- Division of School Readiness & Partnerships:
State Coordinator/ Program Manager- Candace Ferguson (512-463-5619) candace.ferguson@tea.state.tx.us

Program Specialist- Liza Lorenzi (512-463-9762)
liza.lorenzi@tea.state.tx.us
- Division of Discretionary Grants:
Fiscal Grant Manager- James Connolly (512-463-7835) james.connolly@tea.state.tx.us